

Linear Curved Graphic Panel Kit A



Linear Curved Graphic kit is ideal for all types of promotion and exhibition environments. The simple compact aluminium design allows the kit to be easy transported and assembled quickly.

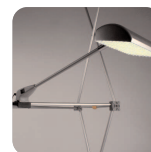
features & benefits

- Portable and easy to assemble
- Anodised aluminium construction
- 75mm round modular post systems as standard
- Available in 3 different sizes: 2000mm(h) x 1000mm(w), 2000mm(w), 3000mm(w)

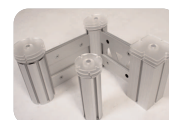
Recommended accessories:



Linear standard shelf - **LN130**



LED Flood light **PS1050**
Requires **US-LINEAR**



Acrylic stacks **LN602-LCA**



Wheeled Budget linear case - **AC504**



hardware specifications

Mag tape graphic size (mm): Overall assembled size (mm):

LK023-C - 2000(h) x 1000(w) 2000(h) x 1265(w) x 390(d)

LK023-D - 2000(h) x 2000(w) 2000(h) x 2245(w) x 455(d)

LK023-E - 2000(h) x 3000(w) 2000(h) x 3110(w) x 740(d)

For full graphic specification please refer to page 3

Assembly Instructions

Linear Curved Graphic Kit A

Male post x 2
(weight 1kg approx)

Steel oval base & M10 bolt x 2
(weight 4kg approx)

1000mm curved beam x 3
(weight 3kg approx)

PVC clear washer x 1

Female post x 2
(weight 1kg approx)

1000mm female beam x 2
(weight 1kg approx)

Linear PVC wing extrusion x 4
(weight 1kg approx)

Allen Key

Please note that the above kit is based on a LK023-C - 2000mm x 1000mm x 2000R

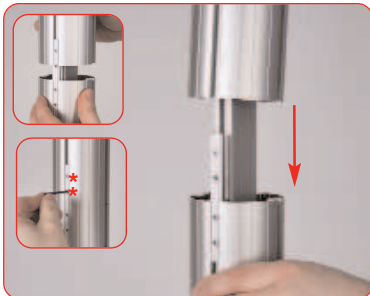


Attach horizontal beams to the vertical frame sides. Tighten locks using a 5mm allen key. If using rigid infill graphics, slide these in to position before tightening beams.



To attach the PVC wing simply click the PVC wing into the channel on the linear until fully secure

Important: Once frame is complete apply steel tape around the frame and PVC extrusion



Align and slide female post over male post, tighten both grub screws using a 2mm allen key.



To attach the graphic simply apply mag tape to the graphic and align the graphic with the frame



Attach base to male post using M10 bolt and allen key. Ensure clear washer is between base & post. Repeat step for 2nd post.

Graphic Specification

Graphic fixing options



Mag tape



Rigid infill



Looped

LK023-C		
<p>Recommended mag tape graphic size (mm): Requires 1 drops at 2000mm (h) x 1000mm (w) Recommended graphic substrate: Mag tape fixing: 300micron polyester</p>	<p>Recommended infill graphic size (mm): 2 at 944 (h) x 1015 (w) Actual 932 (h) x 1003(w) Visible 1 Panel 1 at 1922 (h) x 1015 (w) Actual 1910(h) x 1003 (w) Visible Recommended graphic substrate: 5mm thick foam board</p>	<p>Recommended Looped graphic size (mm): 2000 (h) x 1000 (w) approx including a 160mm double hemmed loop at top and bottom of graphic. Recommended graphic substrate: 105 to 205gsm Lightweight fabric</p>
LK023-D		
<p>Recommended mag tape graphic size (mm): Requires 2 drops at 2000mm (h) x 1000mm (w) Recommended graphic substrate: Mag tape fixing: 300micron polyester</p>	<p>Recommended infill graphic size (mm): 4 at 932 (h) x 992 (w) Actual 920 (h) x 991(w) Visible Recommended graphic substrate: 5mm thick foam board</p>	<p>Recommended looped graphic size (mm): 2000 (h) x 2000 (w) approx including a 160mm double hemmed loop at top and bottom of graphic Recommended graphic substrate: 105 to 205gsm Lightweight fabric</p>
LK023-E		
<p>Recommended mag tape graphic size (mm): Requires 3 drops at 2000mm (h) x 1000mm (w) Recommended graphic substrate: Mag tape fixing: 300micron polyester</p>	<p>Recommended infill graphic size (mm): 4 at 932 (h) x 992 (w) Actual 920 (h) x 991(w) Visible 2 at 932 (h) x 970 (w) Actual 920 (h) x 958 (w) Visible Recommended graphic substrate: 5mm thick foam board</p>	